
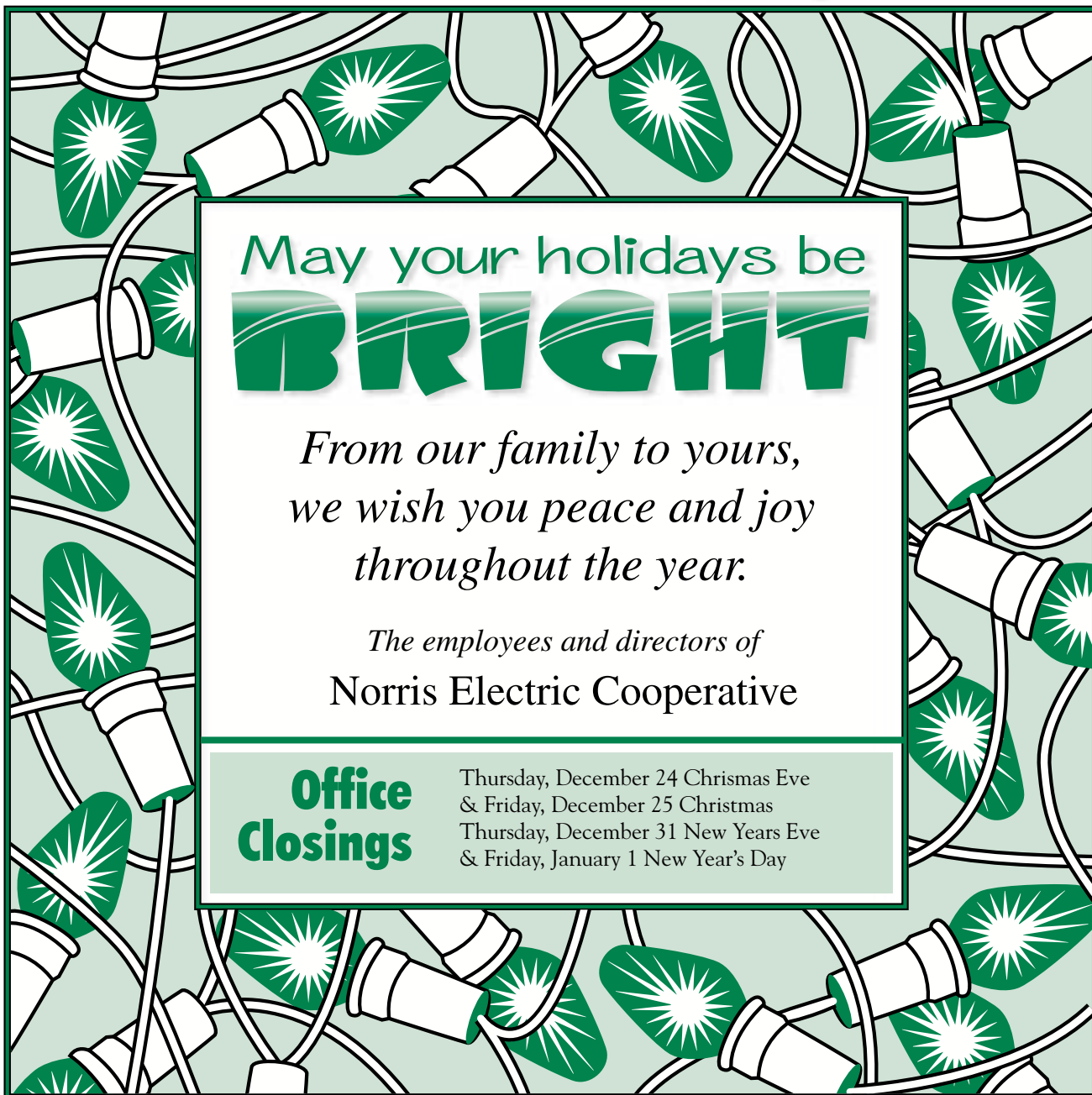


# Norris Electric *News*

Your Touchstone Energy® Partner 



May your holidays be  
**BRIGHT**

*From our family to yours,  
we wish you peace and joy  
throughout the year.*

*The employees and directors of  
Norris Electric Cooperative*

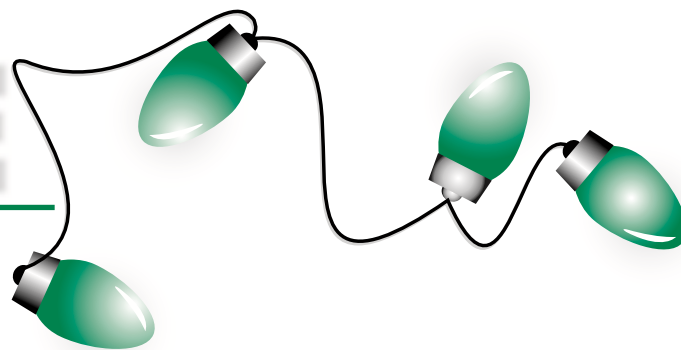
**Office  
Closings**

Thursday, December 24 Christmas Eve  
& Friday, December 25 Christmas  
Thursday, December 31 New Years Eve  
& Friday, January 1 New Year's Day

Norris Electric Cooperative • Newton, Illinois 62448 • 783-8765 • [www.norriselectric.com](http://www.norriselectric.com)

# BE SAFE

## Annual tradition causes life-changing injury



**F**or millions of people every year, the holiday season comes with traditions of festive lights and decorations, extraordinary foods and lavish parties. Unfortunately, time-honored traditions can easily end in tragedy if precautions are not taken. Five years ago, Shawn Miller was one of these people.

His mother, Maria Worth, found her son on the ground with wisps of smoke coming from his body. Miller was unconscious and badly burned. He had been hanging holiday lights in the trees that lined her yard. As he tossed the lights up into the trees, 7200 volts of electricity entered his body, traveling from the overhead power lines through his strand of lights.

“Power lines were the last thing on my mind that day,” said Miller. “I was just hanging Christmas lights at my Mom’s house like I do every year, only this time, I was decorating a new area, the trees that lined the front of the yard.”

Although Miller suffered 27 exit wounds, the loss of his left hand and a finger on his right hand, Miller considers his survival to be miraculous and urges others to use caution this holiday season. He has joined forces with Safe Electricity’s Teach Learn Care TLC campaign to spread awareness about the importance of electrical safety.

“Shawn Miller has a lot to teach us about electrical safety and we are grateful he is sharing his story through our Teach Learn Care TLC campaign,” says Molly Hall, Executive Director of Safe Electricity. “We want people to learn from his tragic experience and care enough to share it with those they love.”

Miller also wants others to learn from his experience.

“I’m lucky to be alive,” Miller said. “I want everyone to be careful, be aware of power lines.”

Safe Electricity and Miller urge everyone to follow these guidelines as you prepare for the holiday season.

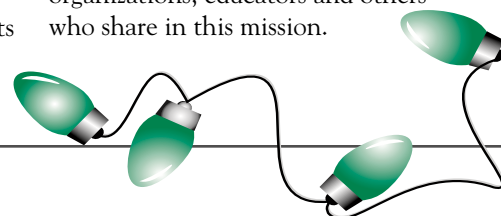
### Safety Tips

- Never throw holiday lights or other decorations into trees near power lines.
- Use only lights that have been safety tested and have the UL label.
- Before use, check each light string for broken sockets, frayed cords, or faulty plugs. Replace damaged strings. Always unplug light strings while replacing bulbs.
- Don’t string together more than three standard-size sets of lights.
- Make sure extension cords are in good condition, are UL-approved and rated to carry the electrical load you will connect to them.
- Match plugs with outlets. Don’t force a 3-pronged plug into a 2-pronged outlet or extension cord.
- Do not overload outlets. Use surge protector strips if multiple outlets are needed.
- Keep electric cords away from high-traffic areas, and don’t run them through doorways, or hide them under rugs or carpets.
- Outdoors, use only lights, cords, animated displays and decorations rated for outdoor use. Cords should be plugged into outlets equipped with GFCIs. Use a portable GFCI if your outdoor outlets are not equipped with them.
- Do not staple or nail through light strings or electrical cords, or attach cords to utility poles
- Don’t let children or pets play with light strings or electrical decorations.
- Place fresh-cut trees away from heat sources, such as heat registers, fireplaces, radiators and televisions; and water frequently.
- Always unplug lights before going to bed or leaving your home.

“After something life-changing happens, you become more interested and learn much more,” Miller said. “Had I known more before this happened, I might still have two hands and the job I loved. I have to find ways to move on with my life and help people learn from what has happened to me. Safe Electricity is helping me help others.”

For more information on electrical safety and to learn more about Shawn’s compelling story visit [www.SafeElectricity.org](http://www.SafeElectricity.org).

Safe Electricity is a public awareness program of the Energy Education Council ([www.EnergyEdCouncil.org](http://www.EnergyEdCouncil.org)), a registered 501 (c) (3) non-profit organization dedicated to promoting electrical safety and energy efficiency. Since 1952, the Council has provided a forum for diverse interests to come together on the mutually vital issues of electrical safety, efficiency, renewable energy and power quality. Headquartered at the University of Illinois, Council members include electric utilities, energy-related organizations, educators and others who share in this mission.



## EDENPURE HEATERS

*Energy Adviser:*

*I recently saw a full-page advertisement in the newspaper for a new kind of space heater. The ad said the heater could heat up a room in five minutes and that I could cut my home's heating bill by 50 percent! The product is called the EdenPURE quartz portable heater and is manufactured by BioTech Research of Canton, Ohio. The claims for this heater sound too good to be true. Is there any truth to them?*

Remember the advertisements for X-ray glasses in the back of MAD magazine when you were a kid? Buy these 'special and amazing' glasses and you could see through walls, clothing, just about anything! Of course, none of the claims were true. What arrived in the mailbox was a pair of cheap glasses with plastic lenses with no special powers, except perhaps for the company selling them. Nonetheless, the company sold thousands of pairs to children and gullible adults.

Well, the folks at BioTech Research, makers of the EdenPURE portable quartz heater, are making some pretty fantastic claims about the performance of a simple electric space heater.

The advertisements sound impressive, claiming that the EdenPURE quartz portable heater "...can cut your heating bills by up to 50 percent", "... pay for itself in a matter of weeks" while it "... heat(s) the room evenly, wall-to-wall, floor-to-ceiling... using a 'cured copper' and infra red light source."

The advertisement goes on to claim that the heater never gets too hot, so it's safe for children and pets. Because it uses no 'burning heat', it does not create carbon monoxide or harmful radiation like other space heaters. It all sounds very impressive.

Essentially, the EdenPURE quartz heater is a small box containing a couple of quartz infrared heat lamps. These lamps shine on copper tubes. Room air is drawn into the heater, passed over the warm tubes

and blown back into the room. It's basically a copper radiator heated by quartz heat lamps with a fan to push room air over the radiator. In other words, an electric heater with a mass – the copper tubes – in front of the heat source, not unlike other space heaters on the market. There is nothing revolutionary about it.

All electric space heaters are 100 percent efficient. It takes a given amount of energy to heat something, whether it is air, or a piece of furniture, or whatever. The heater can use energy to heat the mass of a copper tube, or a ceramic disk, or a tube of oil, but it will still use the same amount of energy to heat whatever it is you are trying to heat.

Yes, the copper tubes or ceramic disk may hold on to heat longer, radiating that heat into the room even after the heater shuts off. However, it takes longer for that heater to start warming the room because the energy is used initially to heat the copper tubes, ceramic disk or oil before it starts to heat the room. There is no increase in efficiency. All electric heaters of

a given wattage produce the same amount of heat.

The advertisement goes to great length to tout that the EdenPURE heater does not burn up oxygen or produce carbon monoxide, static cling, or radiation the way 'combustible' heaters can. While this is true of electric heaters in general, it is rare that a homeowner will use an un-vented combustion space heater in their home. Most homeowners have more sense than that, knowing that combustion heaters should always be vented to the outside through a chimney or flue – not directly into the room being heated.

There is nothing special about this portable electric heater ... except the price! The two sizes for sale cost \$389 for the 500-watt model and \$499 for the 1,000-watt model. Of course, similar space heaters sell locally in home improvement and department stores for under \$75. Do not be fooled by the hype and outrageous advertising claims. The EdenPURE quartz portable heater is just an electric heater.

## Lineman's Rodeo



Norris Electric Cooperative Linemen Bill Fields, Jeff Higgs and Eric Steffen attended the 12th Annual Lineman's Rodeo held on the campus of Lincoln Land Community College on October 2.

## How To Weather a Winter Outage

Severe winter storms containing high winds and ice can cause widespread and prolonged outages. Always call your cooperative when you have an outage, and follow these steps to get through it safely.

1. Have the following on-hand this winter:

- Battery-powered radio
- Flashlights
- Extra batteries
- Extra blankets
- Spare containers you can fill with water for drinking/washing/hygiene
- Food that doesn't require cooking and a hand-held can opener
- Extra prescription medicines
- Special items for infant, elderly or disabled family members
- A first aid kit

2. If you have a standby generator, make sure you operate it safely

and have a transfer safety switch. Install a transfer safety switch now, before your generator is needed. The switch will prevent electricity from traveling back through the electric lines, making the lines very dangerous for crews working to restore your power.

3. Switch off lights and appliances so you don't overload your circuits when power is restored. Leave on one lamp to signal when your power is back on.

4. Close off any unused rooms.

5. If you fear your water pipes will freeze and you don't have a well, turn the taps on slightly so water slowly drips. If you are on a well you can shut off the main water supply to your home and then turn all the taps on all the way to drain any remaining water (pour this water into containers so you can use it for drinking, washing, etc.)



6. If using grills to heat food, use them outside only, away from the house, to prevent carbon monoxide poisoning.

7. Don't open the refrigerator or freezer. Food can stay fresh in a full refrigerator for 24 hours, and in a full deep freezer for 48 hours (24 hours if only half full).

8. Stay inside when possible and dress in layered clothing.

**Warning:** Never go near downed electrical lines. Even if your power is out, the lines could be energized. Call your cooperative immediately and inform them of any dangerous lines.

## Reminder – Board of Director Election Update

At our last Annual Meeting the membership changed the way directors are elected to the Board. This year there are four board seats up for election with one board member to be elected from each of the following counties: Clark, Crawford, Cumberland, and Jasper. Shown below are the counties and the incumbents from those counties that are slated for election this year.



County	Incumbent
Clark	Scott Littlejohn
Crawford	Frank Draper
Cumberland	Joe Helmink
Jasper	Kent Hetzer

All of the incumbents plan to seek re-election. They must submit a petition signed by at least 25 members to be placed upon the ballot. Any other members that reside and take service in any of the counties above

may also submit a petition and be placed on the ballot.

Petitions are available now. Members wishing to obtain petitions may call the office and one will be mailed or members may stop at the office and obtain a petition in person. Completed petitions must be in the cooperative headquarters by noon on Dec. 15, 2009.

Petitioners with qualified petitions will be placed on the ballots. The ballots will be mailed with the January edition of the Illinois Country Living. Ballots may be voted by return mail or by Internet as instructed on the ballots. The results will then be announced at our annual meeting to be held on Feb. 13, 2010.

Norris Electric Cooperative • 8543 N. State Highway 130 • Newton, Illinois 62448 • 618-783-8765  
Office hours: 8 a.m. — 4:30 p.m